

CargoMaster BC400

The specialist to transport heavy vending machines

With the CargoMaster it is possible to transport loads up to 400 kg single-handedly, which makes it your reliable partner. It does not matter whether the load has to be transported upstairs, downstairs or on level ground. Even the loading and unloading of goods into vehicles or onto shelves is possible without great effort, due to the attached lift.

The center of gravity of the load can be adjusted optimally by lifting or lowering the fork, which is electrically adjustable. This facilitates going upstairs or downstairs as well as pushing on level ground dramatically.

Advantages that convince

- Safe transportation of heavy goods up to 400 kg
- Integrated lift to load and unload easily
- Electrically adjustable loading fork to adjust the center of gravity



Standard version

Toe plate version



BC400

400kg



Intelligent Accessories —

For all situations of transportation

The climbing mechanism of the **BC400** provides a safe transport of goods on virtually all stairs inside and outside. The safety brakes stop automatically at each edge of a step.

The battery pack, which can be charged via the charger, provides electricity. One battery charge is sufficient for 8 – 15 floors, depending on the load.

The delivery package of the **BC400** includes the **BC400** with attached lift, a lashing strap, battery pack and the charger. Special accessories make the **BC400** an ideal partner in virtually all situations of transportation.

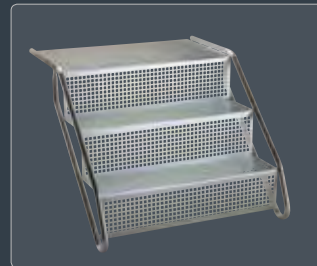
Item number	BC400			
Support bow for high goods				104075
Back wall with felt cover				104074
Adjustable grips (extra charge)				104002
Tilting aid				104063
Support for load fork extension (75 cm)				104005
Extension of the fork load (75 cm, extra charge)				104091
Support for round containers				104057
Auxiliary stairs	Steps	3 steps	4 steps	5 steps
	Regular support	100017	100018	100126
	Extended support	100325	100326	100522
Heavy duty auxiliary stairs	Extended support	104089	104004	104118



Adjustable grips



Support for round containers



Auxiliary stairs made of steel for a load up to 350 kg or the heavy duty auxiliary stairs up to 500 kg

Thanks to these stairs you can comfortably load and unload your transporter, trailer, or transportation vehicle. Boot sills between 480mm – 900mm in height are possible. If your vehicle has a tow-bar you need the auxiliary stairs with an extended support.



Support for load fork



Tilting aid



Support bow for high goods



Back wall with felt cover

Technical data	BA142	BA350	BC141	BC141 Vario	BCC160	BCC200	BC400	Vario-max
Lifting capacity	140 kg	350 kg	140 kg	140 kg	160 kg	200 kg	400 kg	170 kg / 160 kg *
ComfortStep	-	-	-	-	•	•	-	-
Battery display	-	-	-	-	•	•	-	-
Climbing speed / steps per minute (continually adjustable)	8 — 25	4 — 10	8 — 30	8 — 30	9 — 26	4 — 19	3 — 8	8 — 23
Range with one charge of the battery (Floors, depending on load)	30 — 50 Corresponds to: 80 kg approx. 1110 Steps 140 kg approx. 720 Steps	15 — 30 Corresponds to: 200 kg approx. 650 Steps 250 kg approx. 540 Steps 350 kg approx. 330 Steps	15 — 30	15 — 30	15 — 30	15 — 30	8 — 15	10 — 25
Height	1100 - 1700 mm	1195 - 1785 mm	1380 mm	1060 — 1400 mm	1065 — 1490 mm	1065 — 1490 mm	1512 mm	1060 — 1400 mm
Width	580 mm	590 mm	450 mm		466 mm	466 mm	564 mm	450 mm
Depth	470 mm	520 mm	300 mm		290 mm		782 mm	550 mm
Batteries	2 x 12 V / 7,2 Ah		2 x 12 V / 5 Ah					
DC motor	24 V							
Weight, battery pack	6 kg		4,1 kg					
Total weight (including battery pack)	32 kg	46 kg	25,5 kg	26,7 kg	28,5 kg	29,9 kg	84,3 kg	35 kg

*Maximum lifting capacity (passenger transportation)