

HOIST SPECIFICATIONS

CAPACITY: 1500 kg
 LOWERED HEIGHT: 35 mm
 TRAVEL: 1600 / 2400 / 3200 / 4000 mm
 SPEED (NOMINAL): 2.0 m/minute
 TRAVEL TIME: 48 / 72 seconds
 PLATFORM LENGTH: 1600 mm
 PLATFORM WIDTH: 1420 mm
 FLOOR FINISH: CHEQUER PLATE

CONTROLS:
 TWO (2) SETS CONSTANT
 PRESSURE PUSH BUTTON TYPE
 FOR HOIST RAISE/LOWER
 - FIRST SET MOUNTED AT LOWER
 LEVEL
 - SECOND SET MOUNTED AT UPPER
 LEVEL

COLOUR/FINISH: UNIT BLUE RAL 5010.
 WALLS & GATES: YELLOW.

FREESTANDING FRAME
 - DOES NOT NEED TO BE FIXED TO DOCK FACE

UPPER LEVEL SWING GATE FIXED TO FREESTANDING FRAME

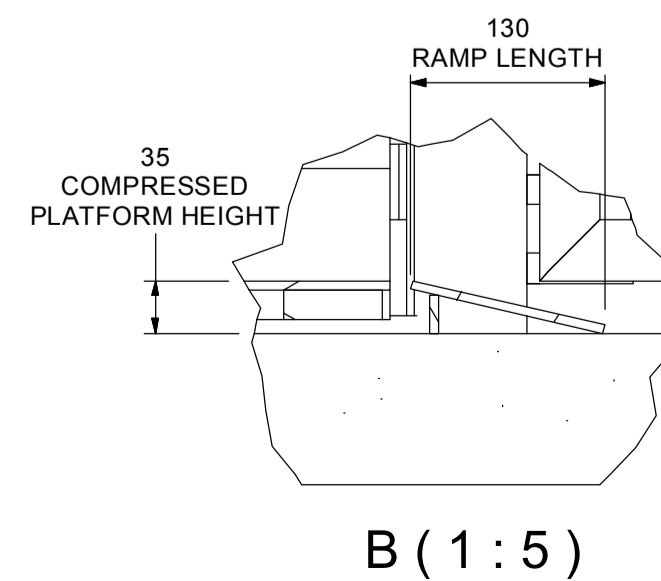
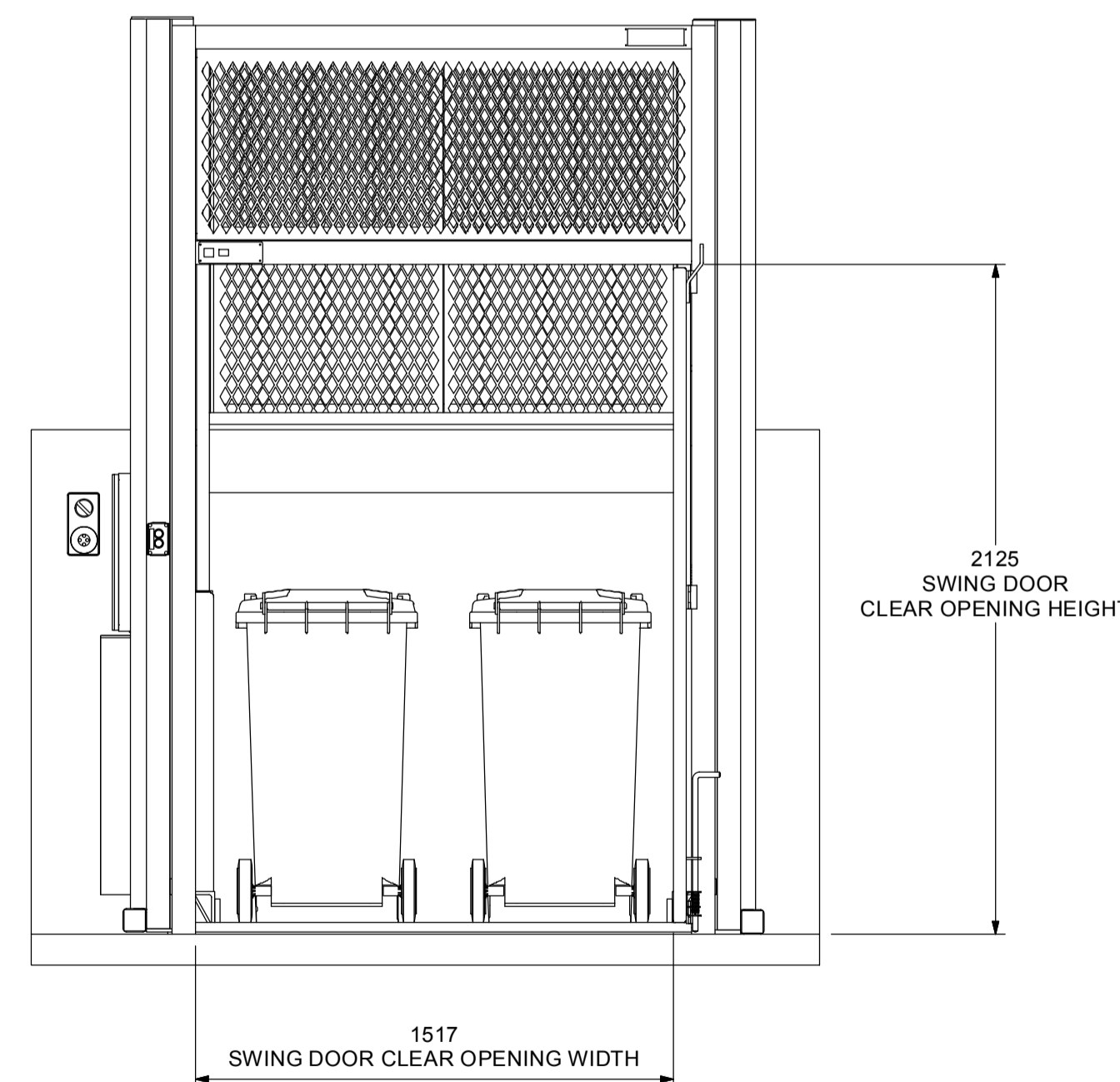
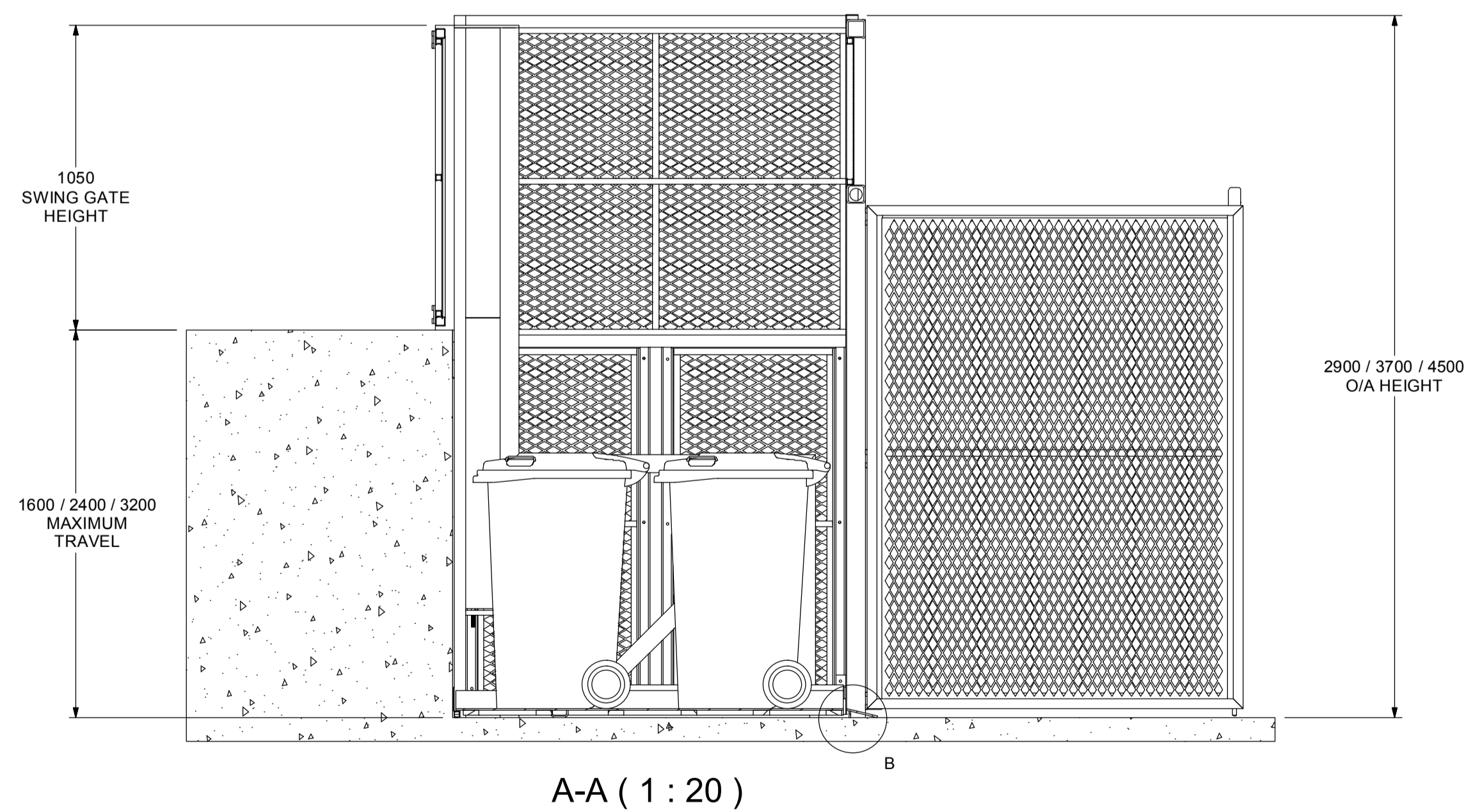
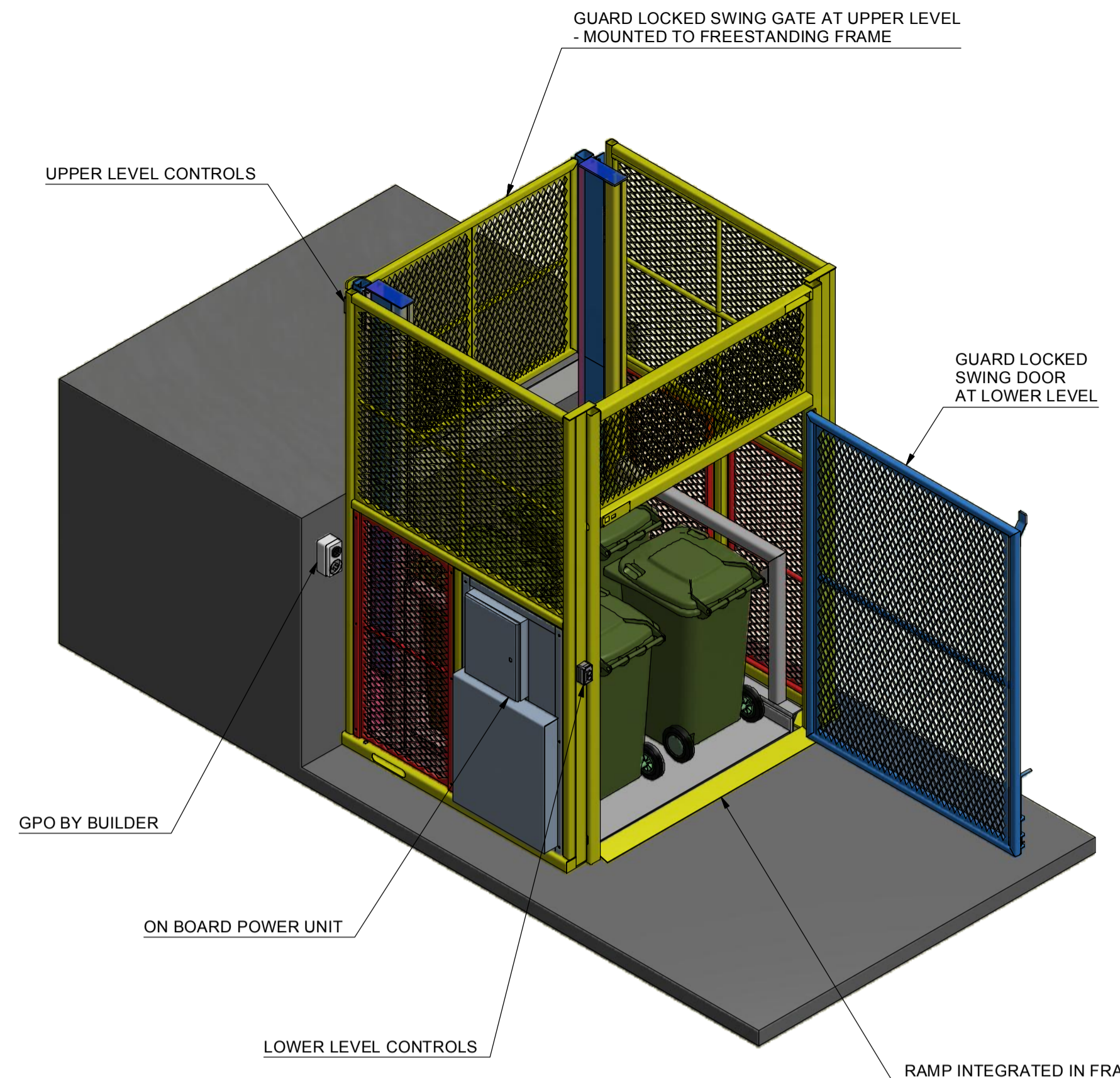
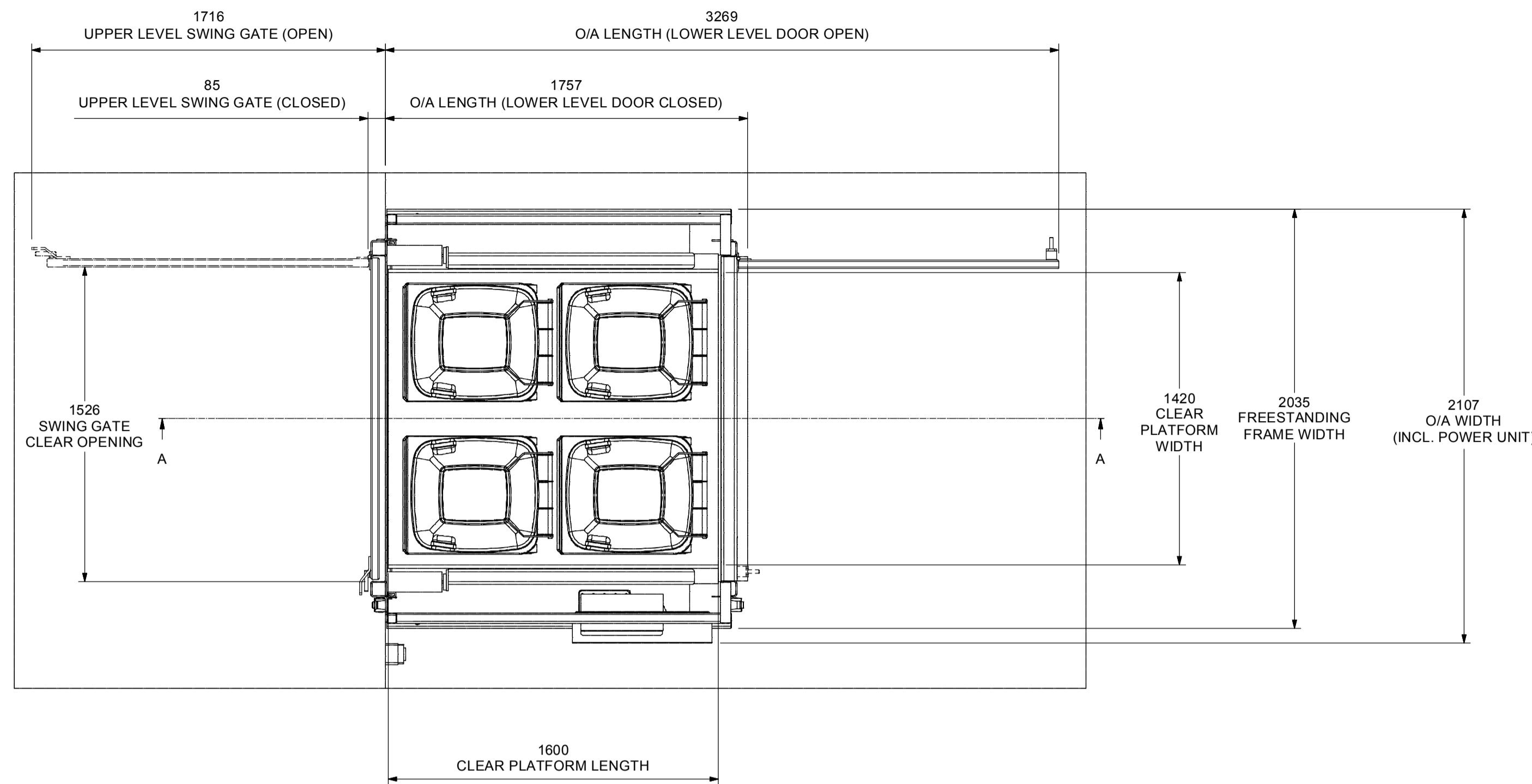
POWER UNIT: 2.2kW, 415/3/50, ONBOARD

BUILDER TO PROVIDE

POWER REQUIREMENTS:
 415V, 3 PHASE, 10AMP, 5 PIN SWITCHED OUTLET
 (CLIPSAL 56C510 OR EQUIVALENT)
 PROTECTED BY A D-CURVE CIRCUIT BRAKER.

GENERAL NOTES:

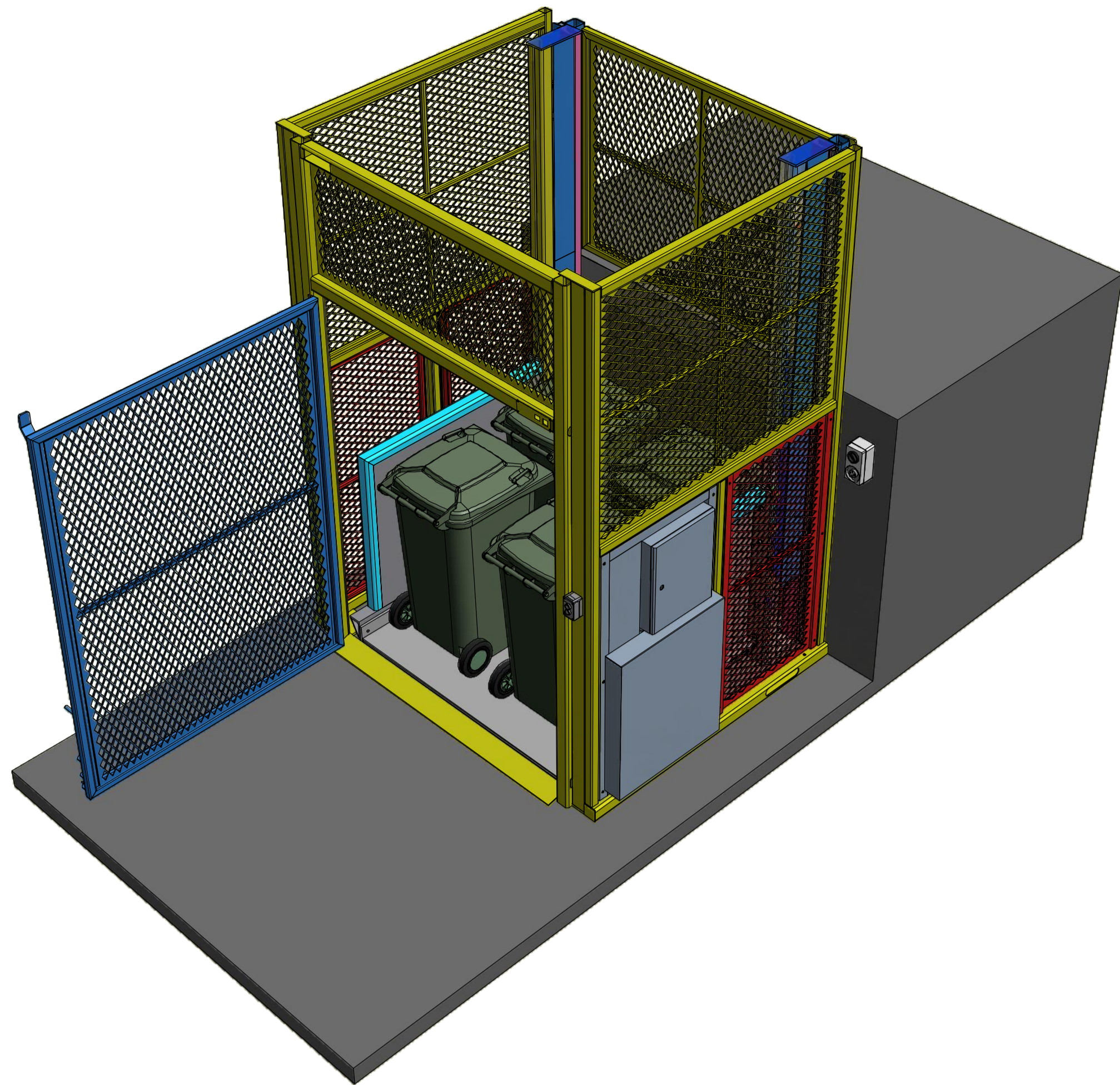
- 1) DRAINAGE BY BUILDER IF REQUIRED.
- 2) OUTLET MUST BE ENERGISED AND AVAILABLE FOR USE BY US PRIOR TO HOIST INSTALL.
 INCLUDES WIRING TO GPO AND SUPPLY OF POWER AS SPECIFIED.



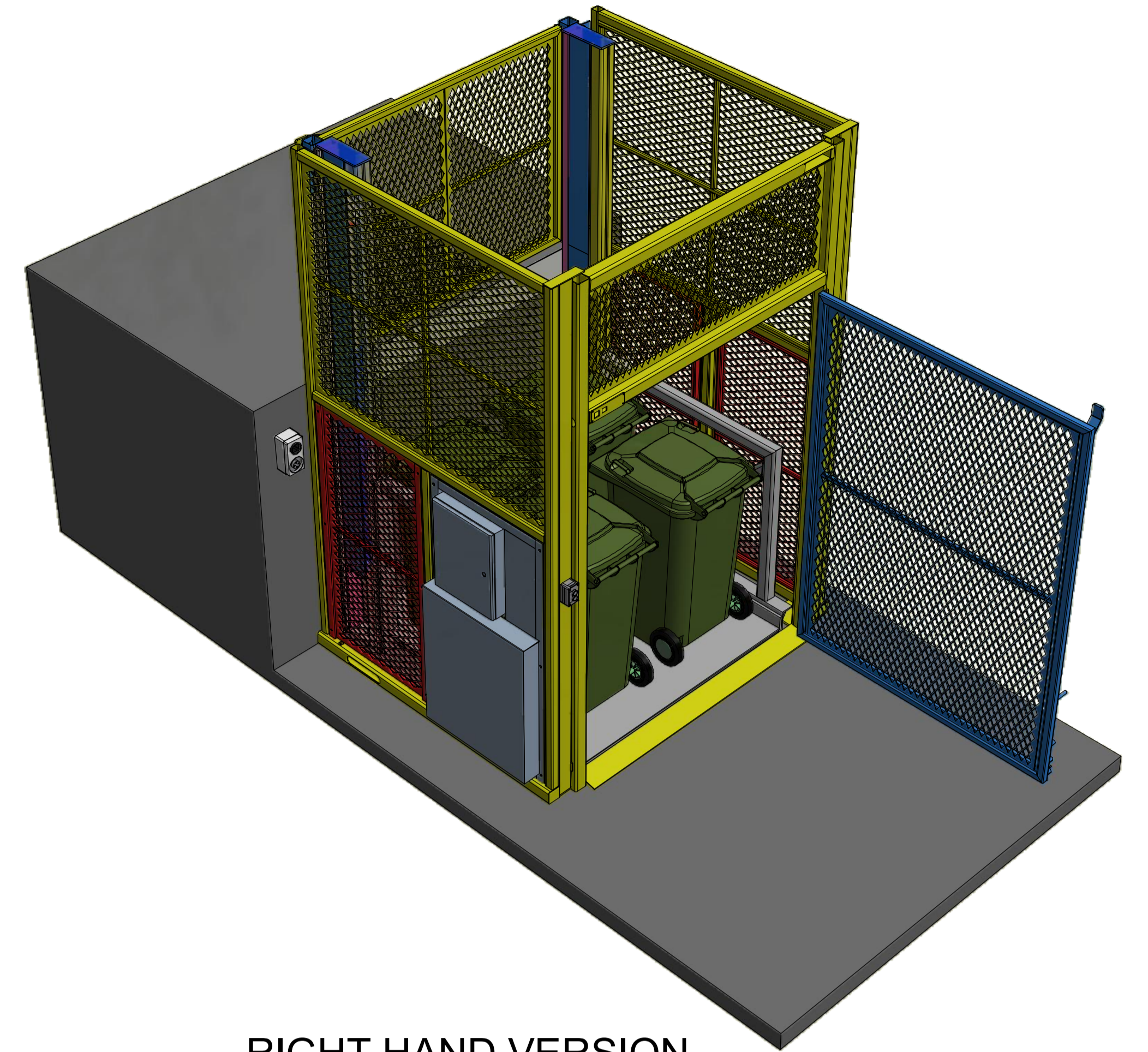
EXAMPLE ONLY
FOR CUSTOMER CONCEPT APPROVAL
DO NOT CONSTRUCT FROM THIS DRAWING
 CONFIRM ALL DETAIL, SIGN AND DATE FOR APPROVAL PRIOR TO MATERIALS HANDLING P/L COMPLETING DESIGN
 DATE: _____ SIGNATURE: _____

QUANTITY:		FINISH:	
MATERIALS HANDLING P/L	ALL DIMENSIONS IN mm UNLESS STATED OTHERWISE	CODE:	DRAWN: hannos
FILENAME: ~BIN-LIFT.GA.idw	SCALE: 1:50	DATE: 7/09/2015	SIZE: A1
		DRG. NO.:	JOB NO.:
		SERIAL NO.:	TITLE: NEW BIN LIFT DESIGN
			GENERAL ARRANGEMENT

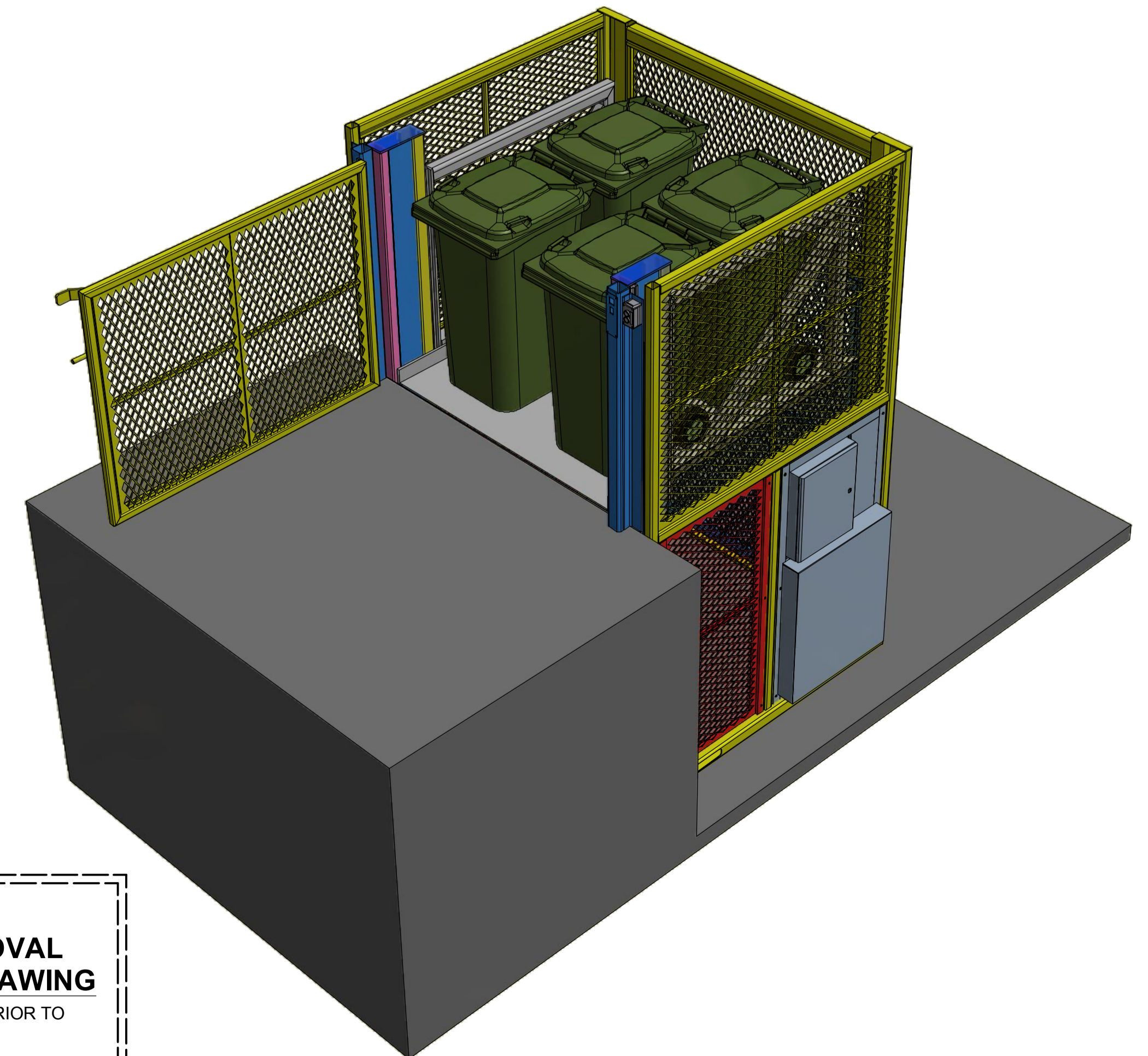
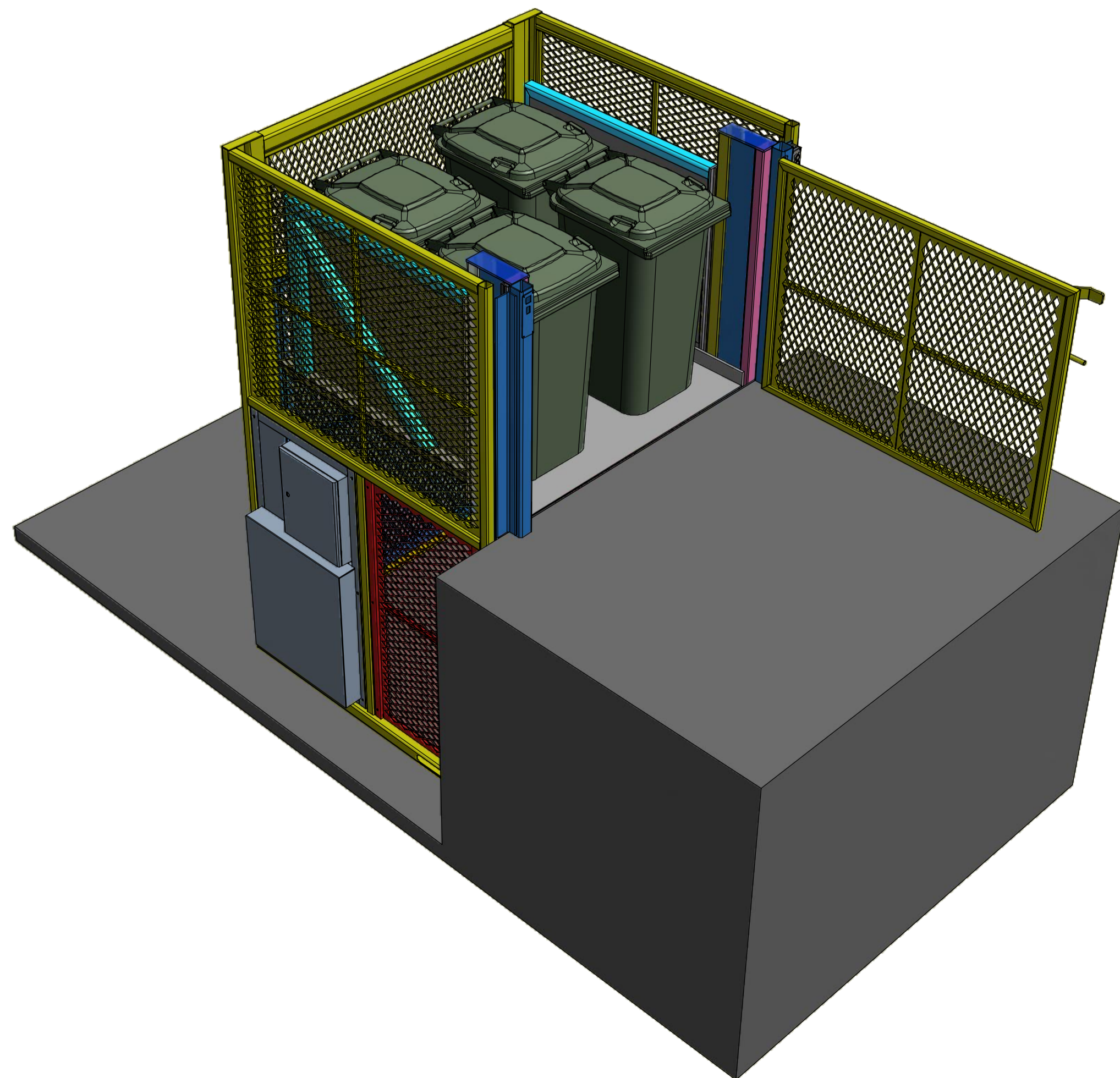
DATE	INIT.	REV	DESCRIPTION
------	-------	-----	-------------



LEFT HAND VERSION



RIGHT HAND VERSION



EXAMPLE ONLY
FOR CUSTOMER CONCEPT APPROVAL
DO NOT CONSTRUCT FROM THIS DRAWING
 CONFIRM ALL DETAIL, SIGN AND DATE FOR APPROVAL PRIOR TO
 MATERIALS HANDLING P/L COMPLETING DESIGN

DATE: _____ SIGNATURE: _____

QUANTITY:		FINISH:	
M00R00000D0000	ALL DIMENSIONS IN mm UNLESS STATED OTHERWISE	CODE:	DRAWN: hannos
FILENAME: ~BIN-LIFT.GA.idw	SCALE: 1 : 50	DATE: 7/09/2015	SIZE: A1
		DRG. NO.:	JOB NO.:
		SERIAL NO.:	TITLE: NEW BIN LIFT DESIGN GENERAL ARRANGEMENT