

# TB MINI SAFETY BARRIER SPECIFICATION SHEET



## PRODUCT SPECIFICATIONS

### APPLICATION

Environment	The TB Mini is used as protection against rolling containers, pallet trucks or shopping trolleys with limited speeds and where height is not important. Quick and easy to install.	
Advisory speed	10 km/h	For gross weight vehicle of 500 kg
	7 km/h	For gross weight vehicle of 1000 kg

### MATERIAL

Polyolefin - UV resistant - Fire class HB<sup>\*</sup> - Non conductive - Impervious to most chemical products<sup>\*\*</sup>



### STANDARD COLORS

Yellow

### BASEPLATES

	Steel	Zinc Coated Steel	Stainless steel
Material	Steel 37	Steel 37	INOX (RVS 304)
Coating	Lacquered	Lacquered + electro plating	No lacquer / No coating
Color	High gloss black	Matt black	Natural color

### FIXATIONS

	ZINC COATED	INOX
<b>HEAVY DUTY EXPANSION ANCHOR</b> 	Length = 120 mm Size = M12 Drill hole diameter = 12 mm Max load (pull out) = 7.9 kN	Length = 120 mm Size = M12 Drill hole diameter = 12 mm Max load (pull out) = 7.9 kN
<b>THREADED ROD (WITH CHEMICAL ANCHOR)</b> 	Length = 120 mm Size = M12 Drill hole diameter = 14 mm Max load (pull out) = 16 kN	Length = 120 mm Size = M12 Drill hole diameter = 14 mm Max load (pull out) = 16 kN

<sup>\*</sup>Fire class HB = Slow burning; classification according to UL94: US Standard for Safety of Flammability of Plastics  
<sup>\*\*</sup>Ask your local sales office for resistance to specific chemicals.



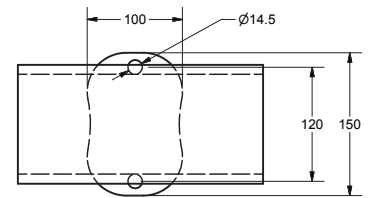
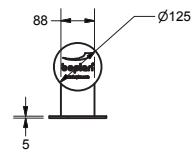
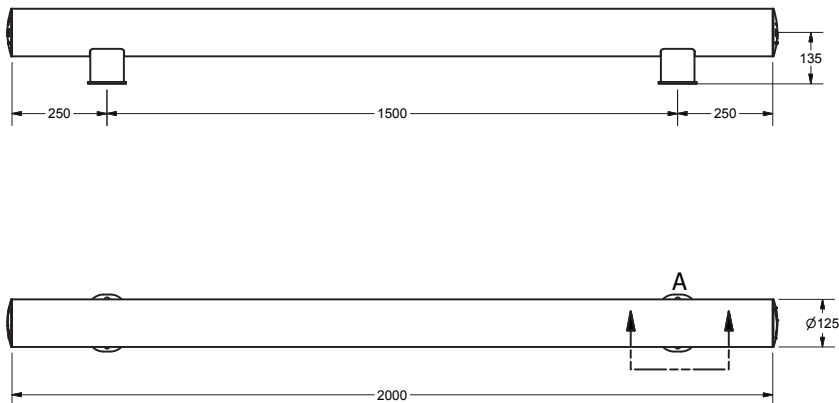
## FEATURES AND FUNCTIONALITY - TB MINI

SIZE		
Height	200 mm	
Profile section tube	Ø125 mm (10 mm thick)	
Profile section posts	112 mm x 112 mm (10 mm thick)	
Standard length	2000 mm (other sizes: 500 mm - 1999 mm)	
Baseplates	150 mm x 100 mm (5 mm thick)	
IMPACT PERFORMANCE		
Test conditions	Ambient temperature	20 °C
	Length	2000 mm
Test conditions	Vehicle weight	500 kg
	Floor	Industrial concrete
Test conditions	Success criteria	Vehicle stopped by barrier
90° impact	Maximum impact on post	4000 Joule
	Maximum impact on tube	9500 Joule
45° impact	Maximum impact on tube	13000 Joule

REQUIREMENTS	
Concrete quality	minimum C25/30
Concrete floor plate thickness (mm)	minimum 150 mm
Concrete slab dimension around posts (mm)	500 (h) x 500 (w) x 400 (d)
Operational temperature	-10°C up to +40°C (For applications at lower temperatures, contact your local sales department)
Water and humidity	<b>Steel</b> (standard): dry indoor use only. <b>Zinc coated:</b> outdoor use in most environments. <b>RVS:</b> outdoor use or frequent exposure to water and humidity.

## REFERENCE LIST - TB MINI

	Yellow	Multicolor
Std module 2000mm Std module 2000mm SS Std module 2000mm ZC	MB2000-2000-0001YE MB2000-2000-0001YES MB2000-2000-0001YEZ	MB2000-2000-0001MC MB2000-2000-0001MCS MB2000-2000-0001MCZ
Non-Std module 500 - 1999mm Non-Std module 500 - 1999mm SS Non-Std module 500 - 1999mm ZC	MB2001-1999-0001YE MB2001-1999-0001YES MB2001-1999-0001YEZ	MB2001-1999-0001MC MB2001-1999-0001MCS MB2001-1999-0001MCZ



DETAIL A  
SCALE 1 / 4