

# BULK WASTE CRANE BINS MBWB30 SPECIFICATIONS



(Standard MBWB30 model shown)

The type MBWB30 Bulk Waste Bin is ideal for building and mining sites using overhead cranes. This Bin is designed to suit your application with a capacity up to 5.0 Tonne Safe Working Load (SWL).

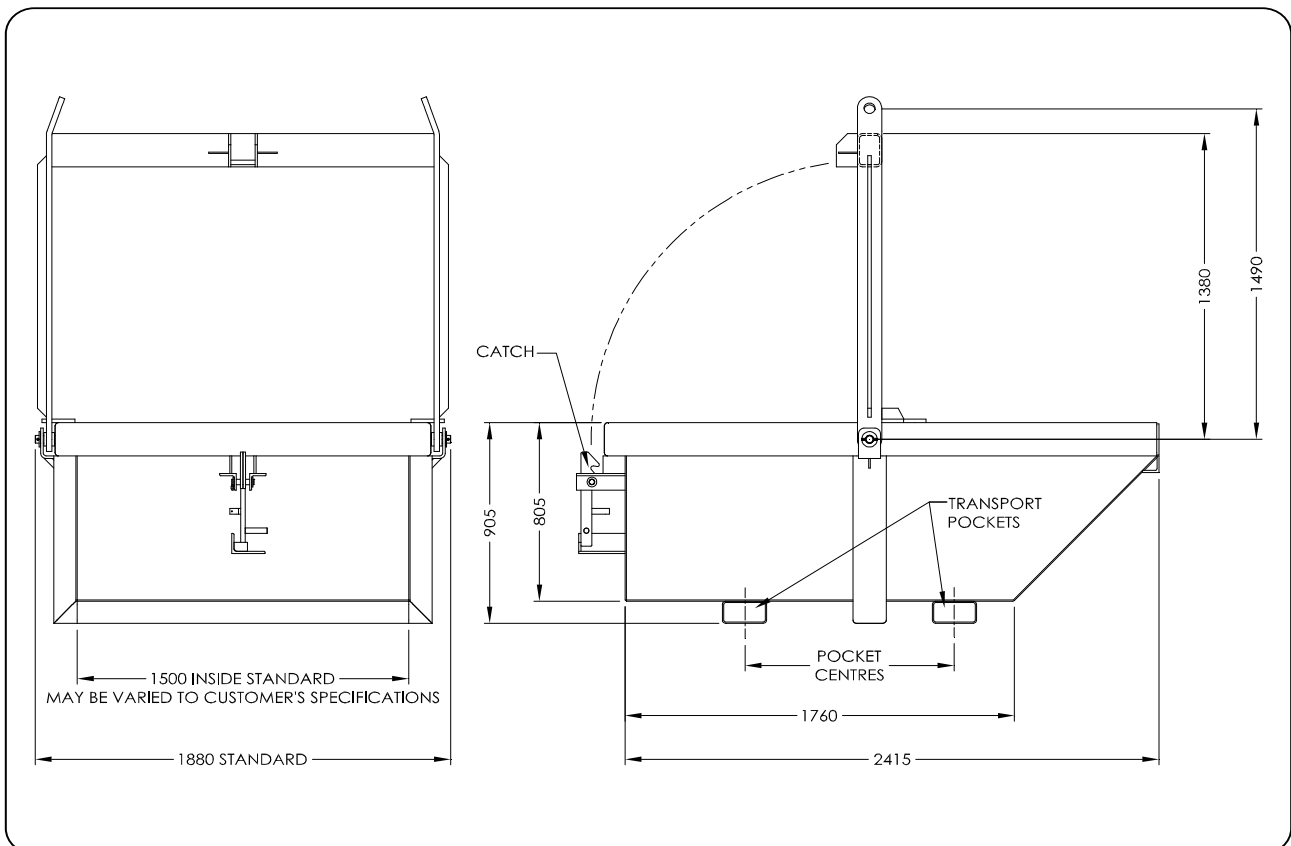
Lifting Chain Set NOT supplied with unit.

For capacities of 3.0 Tonnes or less, please refer to the type MBWB20 Bulk Waste Bin specifications.

## SPECIFICATIONS:

(for Standard MBWB30 5T models)

- Pocket Size 185 x 85 mm
- Pocket Centres 950 mm
- Safe Working Load 5.0 Tonne
- Unit Weight 825 kg
- Volume Capacity 3.0 m<sup>3</sup>



Australia Wide Sales & Service

sales@materialshandling.com.au | www.materialshandling.com.au | 1300 25 84 07

**MATERIALS**  
**Handling** PTY LTD *Working with ease.*