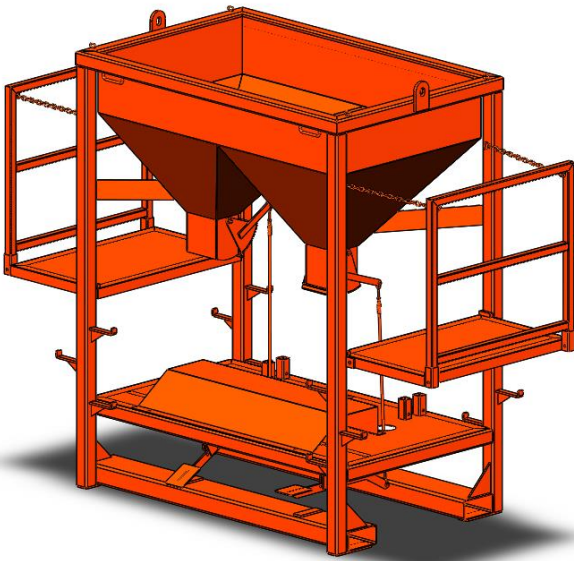


SANDBAG FILLING FRAME MBSB02RS SPECIFICATIONS



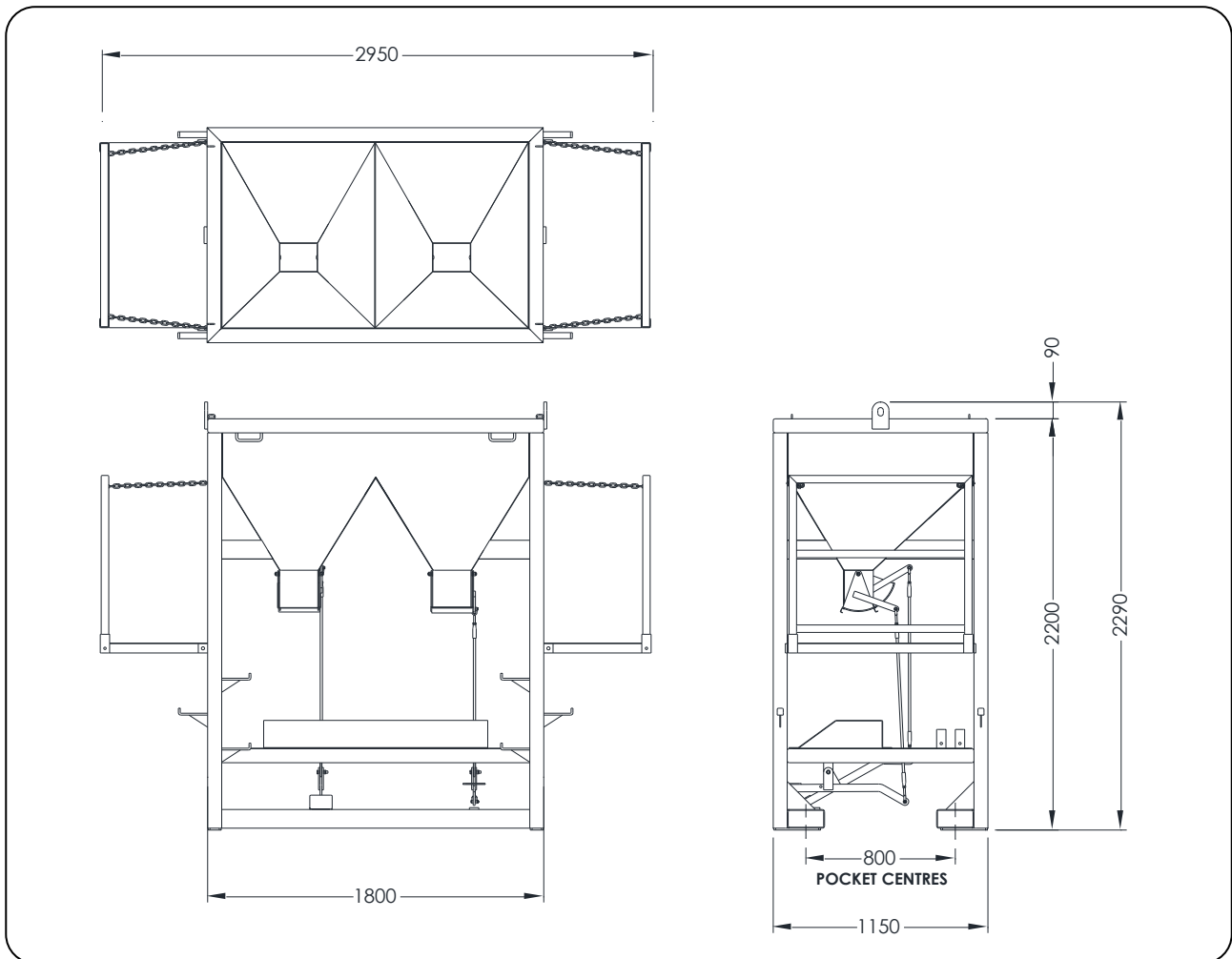
(Standard type MBSB02RS shown)

The gravity fed, foot-operated Sandbag Filling Frame is designed to increase efficiency while reducing the risk of injuries normally associated with manual handling and bag filling. Ideal for builders, landscapers, councils, emergency services and civil work contractors. Improving efficiency, this unit enables the filling of a 20 kg bag approximately every 6-8 seconds.

The standard finish of the type MBSB02RS Sandbag Filling Frame is enamel painted over primed steel.

SPECIFICATIONS:

- Pocket size: 185 x 85 mm
- Pocket Centres: 800 mm
- Working Load Limit: 1800 kg
- Unit Weight: 592 kg
- Volume Capacity: 0.85 m³
- Length (excluding side platforms): 1800 mm
- Side Platform Model



Australia Wide Sales & Service

sales@materialshandling.com.au | www.materialshandling.com.au | 1300 25 84 07

MATERIALS
Handling PTY LTD Working with ease.