

# WHEELIE BIN ROTATOR BASE SPECIFICATIONS



The MW660RB Wheelie Bin Rotator Base is a sturdy metal base with fork pockets that bolts to a standard 660 litre wheelie bin allowing rotation of the bin where your forklift is fitted with a 180 or 360 degree rotator attachment.

## SPECIFICATIONS:

- Allow emptying of a 660 litre wheelie bin by a forklift with rotator attached
- Securely bolts to the wheelie bin in four locations with supplied wheel bolts
- Optional Tow Hitch MW660T can be fitted to allow transport of multiple bins with a towing vehicle
- Increases the functionality of industry standard wheelie bin in the workplace
- Zinc finish

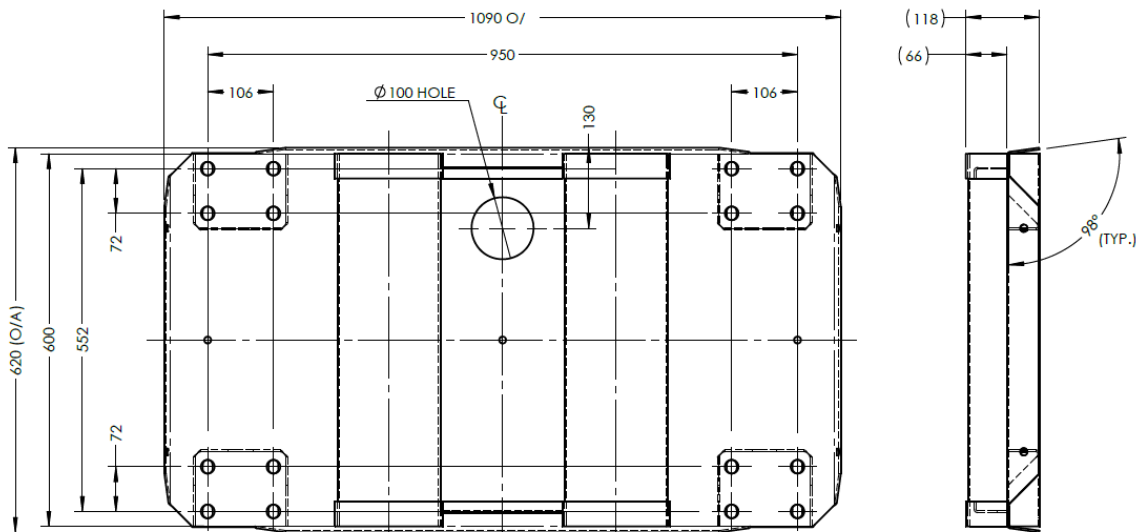
## FEATURES:

Working Load Limit (WLL): 500 kg

Unit Weight: 30 kg

Pocket Size: 160 x 60 mm

Pocket Centres: 365 mm



**VIEW UNDERNEATH**

